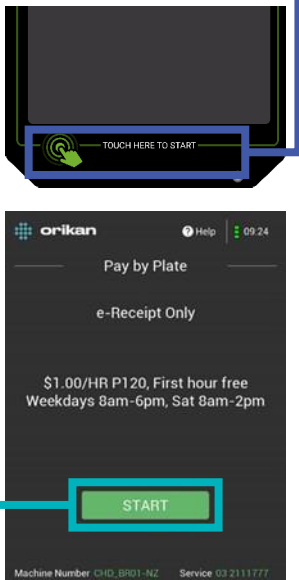


How to use a pay-by-plate parking meter

Step 1:

Wake the screen by swiping an open palm across the **'Touch to start'** at the bottom of the screen and select **'Start'**.



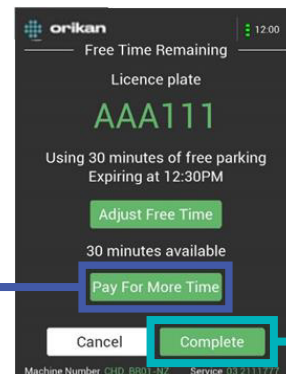
Step 2:

Enter your registration/number plate using the keypad on the screen. Press **'Continue'**.



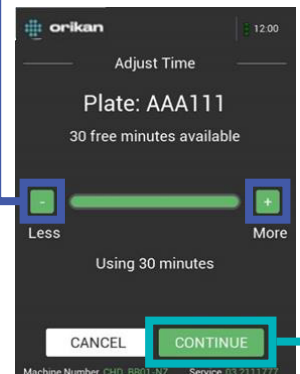
Step 3:

Free time can be adjusted to less than 30 minutes or select **'Pay for more time'** if you wish to stay longer. Please note, free time cannot be increased. Press **'Complete'** if you want to park for the time shown.



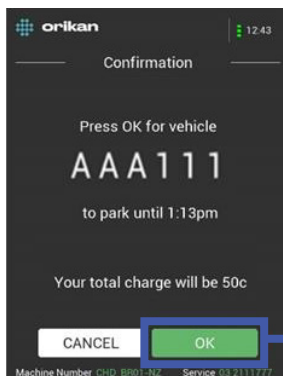
Step 4:

Use the **+** and **-** keys to select the amount of time required. Press **'Continue'**. The parking time cannot exceed the restriction shown on the sign.



Step 5:

Confirm the parking period and fee by clicking **'OK'**.



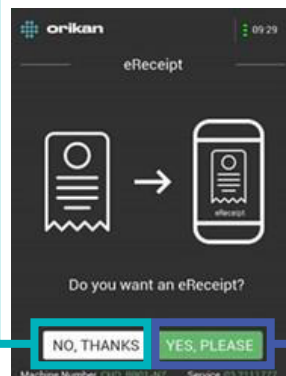
Step 6:

Tap your physical or digital card on the **Tap & Go** reader, located on the body of the meter under the screen.

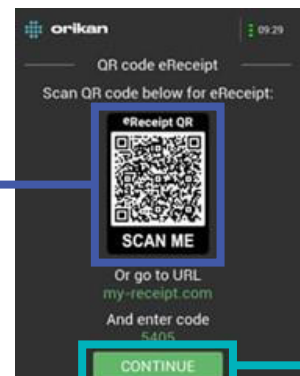


Step 7:

Select **'Yes'** if you would like an e-receipt or **'No'** if no receipt is required.



If yes, **scan the QR code** to receive your eReceipt and press **'Continue'**.



Parking payment has been completed and you may leave the vehicle.